

Daily Current Affairs

Date : 22 April 2026



Index

Sr. No.	Topic
1.	'Raj-Mamta' Program Dedicated to Mental Health
2.	43rd Sarus Crane Census at Keoladeo National Park
3.	Rajasthan Ranks Third in the Country in Rooftop Solar Energy
4.	News in Shorts 1. Roadshow for the Global Rajasthan Agritech Meet (GRAM) 2026 2. 15th Edition of the 'Great Indian Travel Bazaar' 3. 'Rajasthani Food' at Rashtrapati Bhavan 4. Hydrogen Gas Lab at the University of Rajasthan 5. Shreyanshi Jain: Gold Medal at the 1st FIDE Cadets and Youth Blitz Solving Championship 6. Rajasthan at the '11th Moscow Stars Wushu Championship – 2026' 7. Aryan Nehra: Bronze Medal at the International Berlin Open – 2026
5.	Jamun (<i>Syzygium cumini</i>)
6.	Circular Economy
7.	Samruddha Gram Initiative
8.	Odisha: The First State to Launch Marine Spatial Planning
9.	South Korean President's Visit to India
10.	Herfindahl-Hirschman Index (HHI)
11.	'Household Social Consumption: Health' Survey

--1:--



'Raj-Mamta' Program Dedicated to Mental Health



Why in News?

- The 'Raj-Mamta' program was announced by the Government of Rajasthan in the 2026-27 budget. In this context, preparations for the effective implementation of the 'Raj-Mamta' program were initiated on the occasion of World Health Day.



राजस्थान बजट 2026-27

स्वास्थ्य से संबंधित प्रमुख घोषणाएँ

**मानसिक स्वास्थ्य के लिए
राज ममता (राजस्थान
मेंटल अवेयरनेस मेंटोरिंग एंड ट्रीटमेंट
फॉर ऑल) प्रोग्राम संचालित होगा।**



Key Points:

- **Full name of 'Raj-Mamta':** Rajasthan Mental Awareness, Monitoring, and Treatment for All.
- Under this program, special counseling sessions will be organized in educational institutions to curb rising stress levels and suicidal tendencies among the youth. 'Health Friends' (Swasthya Mitras) and 'ASHA Sahyoginis' will be trained to disseminate awareness at the grassroots level.
- **Center of Excellence:** Under the 'Raj-Mamta' initiative, a 'Center of Excellence in Mental Health' is being established in Jaipur, where state-of-the-art facilities—such as advanced counseling and telemedicine services—will be available.
- **Mental Health Care Cells:** 'Mental Health Care Cells' will be established at every district headquarters across the state to ensure that citizens have access to expert consultation, rehabilitation, and treatment within their own districts.

Other Important Points:

- **National Tele-Mental Health Program:** With the objective of further improving access to quality mental health counseling and care services across the country, the 'National Tele-Mental Health Program' was launched by the Ministry of Health and Family Welfare on October 10, 2022.
- Additionally, on the occasion of World Mental Health Day (October 10, 2024), the government launched the 'Tele-MANAS' mobile application to provide assistance regarding issues such as mental health and mental disorders.
- Under the 'National Tele-Mental Health Program,' services have been operational in Jaipur since May 2023 and in Jodhpur since November 2023.

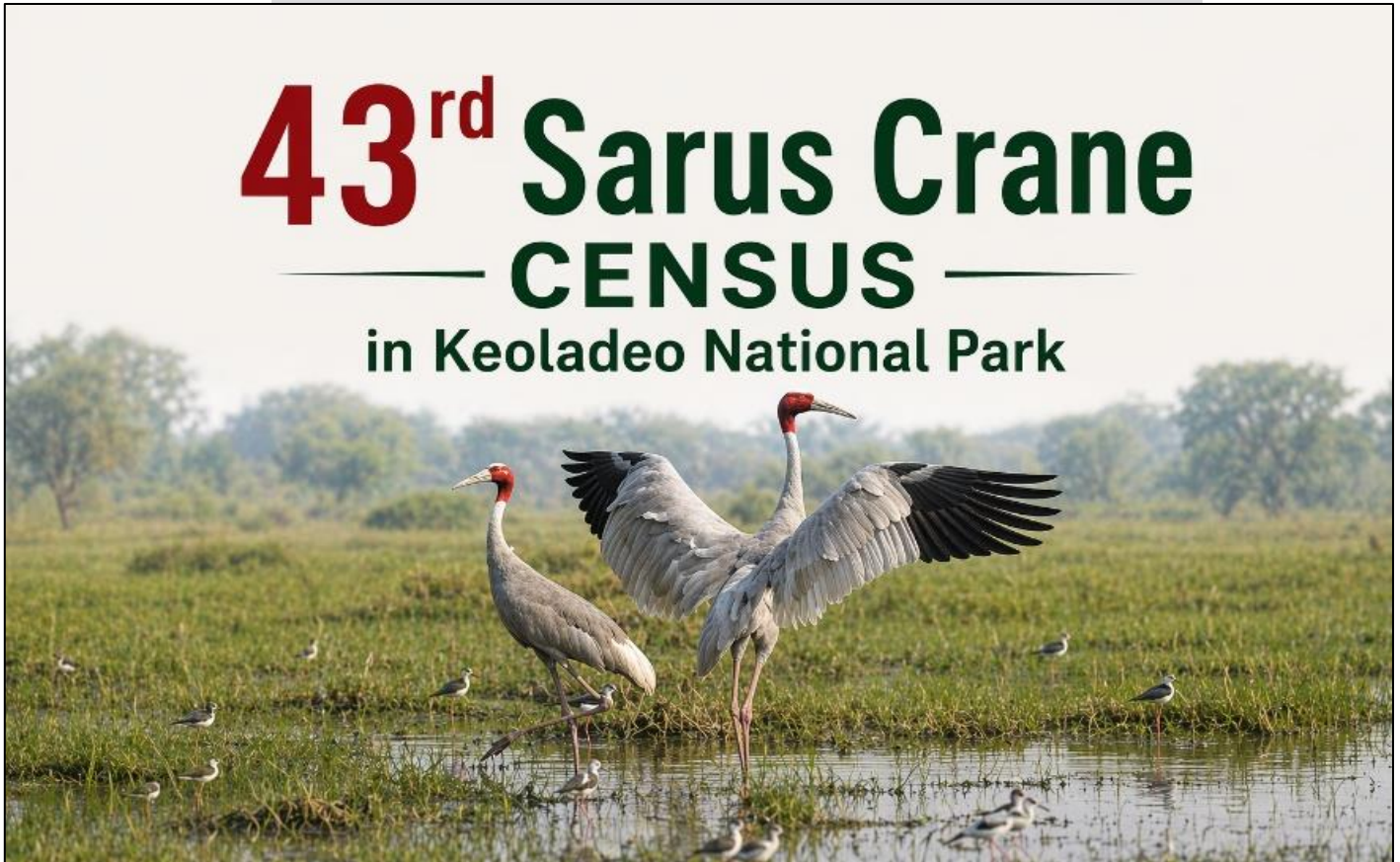
Facts for Prelims:

- **Mental Healthcare Act, 2017:** A progressive legislation enacted in India to grant rights to individuals suffering from mental illnesses and to ensure their proper treatment.
- This Act came into force on May 29, 2018, replacing the Mental Health Act, 1987.

43rd Sarus Crane Census at Keoladeo National Park

Why in News?

- Recently, the 43rd Sarus Crane census was conducted at the Keoladeo National Park, located in Bharatpur.



Key Points:

- Organizers:** Keoladeo Ghana National Park, Bombay Natural History Society (BNHS), and the Rajasthan Forest Department.
- Objective:** To assess the current population of Sarus Cranes, as well as the status of their breeding grounds and habitats (wetlands).
- This annual census aids in the conservation of endangered species, understanding ecosystem balance, and generating data for future environmental policies.

--:4:--

Daily Current Affairs

Date : 22 April 2026



- **Statistics:** According to the 43rd Sarus Crane census, the presence of 22 Siberian Cranes was recorded within the Ghana Bird Sanctuary, while 81 were recorded in the wetland areas of Bharatpur and Deeg.
- **Book Launch:** A book titled "Ecology and Environmental Biology" (Paristhitiki evam Paryavaran Jaiviki), authored by Dr. M.M. Trigunayat and Dr. Kritika Trigunayat, was released by the Minister of State for Home Affairs, Jawahar Singh Bedham.

Facts for Prelims (Keoladeo National Park):

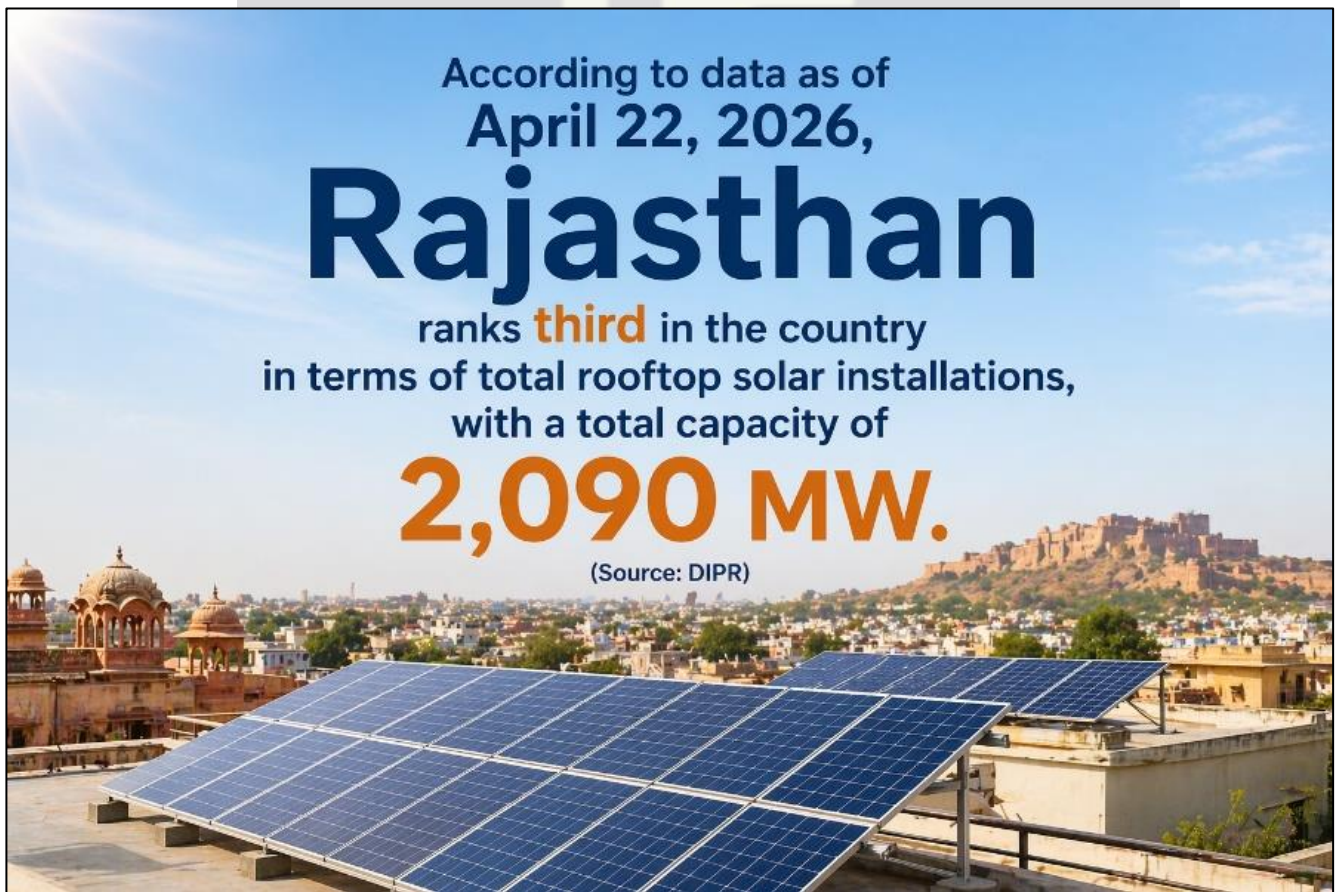
- **Location:** A renowned wetland and bird sanctuary situated in Bharatpur.
- **Other Name:** 'Paradise for Birds'.
- Globally famous for the rare Siberian Crane.
- The workplace (Karmasthali) of the renowned ornithologist, Dr. Salim Ali.
- **Lifeline of the Park:** Ajan Dam.
- **Year 1981:** Accorded the status of a Ramsar Site.
- **Year 1982:** Accorded the status of a National Park.
- **Year 1985:** Declared a World Heritage Site by UNESCO.
- **Note:** A carnivorous plant known as Utricularia (or Bladderwort) is found in this National Park.

--:5:--

Rajasthan Ranks Third in the Country in Rooftop Solar Energy

Why in News?

- According to data dated April 22, 2026, Rajasthan ranks third in the country in terms of total rooftop solar installations, with a cumulative capacity of 2,090 MW. (Source: DIPR)



Key Points:

- **Top three states in rooftop solar installations:** Gujarat (6,882 MW), Maharashtra (5,442 MW), and Rajasthan (2,090 MW).
- **Rajasthan's ranking under the 'PM-Surya Ghar: Muft Bijli Yojana'** (PM-Surya Ghar: Muft Bijli Yojna): Fifth following Gujarat, Maharashtra, Uttar Pradesh, and Kerala.

--6--

Daily Current Affairs

Date : 22 April 2026



- **Under the PM-Surya Ghar:** Muft Bijli Yojana, 177,468 rooftop solar plants with a combined capacity of 686 MW have been installed in the state to date.

Facts for Prelims:

- Rajasthan characterized by a solar radiation intensity of 6–7 kWh/sq. m/day and over 325 sunny days annually holds immense potential for solar energy; according to the Ministry of New and Renewable Energy, its estimated potential stands at 142 GW.

Rajasthan's Integrated Clean Energy Policy, 2024:

- **Primary Objective:** To contribute towards achieving the national target of 500 GW of renewable energy capacity by the year 2030.
- Under this policy, a target has been set to establish 115 GW of renewable energy generation capacity and 10 GW of energy storage capacity by the year 2029–30. The policy aims to promote solar energy, wind energy, biomass, and green hydrogen.
- The Rajasthan Solar Park Development Company Limited (RRECL) has been established to manage and develop the infrastructure for renewable energy projects and solar parks.

--7:--

NEWS IN SHORTS

S. No.	News
1.	<p>Roadshow for the Global Rajasthan Agritech Meet (GRAM) 2026</p> <ul style="list-style-type: none">■ A roadshow for the ‘Global Rajasthan Agritech Meet (GRAM)’ was organized in New Delhi on April 23, 2026.■ The ‘Global Rajasthan Agritech Meet (GRAM) 2026’ will be held from May 23 to May 25, 2026, at the Jaipur Exhibition and Convention Center (JECC), Sitapura (Jaipur).■ In addition to New Delhi, roadshows will also be organized by the State Government in Ahmedabad, Hyderabad, and Pune.■ The objective of these roadshows is to showcase the state's progressive agricultural policies, investment potential, and the opportunities available in the agriculture and allied sectors on national and international platforms.
2.	<p>15th Edition of the 'Great Indian Travel Bazaar'</p> <ul style="list-style-type: none">■ Event Dates: April 26 to April 28, 2026, in Jaipur.■ Edition: 15th.■ Organizers: Rajasthan Department of Tourism, Union Ministry of Tourism, and FICCI.■ Partners: Hotel and Restaurant Association of Rajasthan, Indian Heritage Hotels Association, and Rajasthan Association of Tour Operators.■ Objective: To strengthen India's inbound tourism (arrival of foreign tourists) and to promote networking.

3.

'Rajasthani Food' at Rashtrapati Bhavan

- Rajasthani cuisine was served at a State Banquet recently hosted at Rashtrapati Bhavan in honor of the President of South Korea.
- Traditional Rajasthani dishes were selected for this special dinner—hosted by President Droupadi Murmu—to showcase the heritage of Rajasthan.
- At this banquet, traditional dishes from Jaisalmer, Jodhpur, Udaipur, Bikaner, and Jaipur were served in a modern and regal style.

4.

Hydrogen Gas Lab at the University of Rajasthan

- The state's first high-tech Hydrogen Gas Research Lab is being developed at the ECH (Energy & Chemical Hub) Center within the University of Rajasthan, Jaipur.
- **Objective:** To promote research in the fields of hydrogen energy and antimatter energy.
- It is noteworthy that the 'Made in India Hydrogen Gas Prototype' was developed at this very center within the university.

Other Key Points:

- **India's first multi-purpose Green Hydrogen pilot project:** Jhakri, Himachal Pradesh.
- **India's first hydrogen bus:** Operated by NTPC in Leh, Ladakh.
- **India's first 'Make in India Green Hydrogen Plant':** Commissioned by the Deendayal Port Authority at Kandla Port, Gujarat.
- **India's first hydrogen fuel cell-powered truck:** Developed by Adani Enterprises.

5. **Shreyanshi Jain: Gold Medal at the 1st FIDE Cadets and Youth Blitz Solving Championship**

- Jaipur-based chess player Shreyanshi Jain recently won a gold medal in the Under-8 Girls' category at the '1st FIDE Cadets and Youth Blitz Solving Championship – 2026'.
- **Venue of the competition:** Vrnjačka Banja, Serbia.

6. **Rajasthan at the '11th Moscow Stars Wushu Championship – 2026'**

- Two players from Rajasthan won one gold and one silver medal at the '11th Moscow Stars Wushu Championship – 2026'.
- Shiv Kumar (Gold Medal); Weight Category: 60 kg.
- Dheeraj Chaudhary (Silver Medal); Weight Category: 100 kg.
- **Venue of the competition:** Moscow (Russia), held from April 15 to 21, 2026.

7. **Aryan Nehra: Bronze Medal at the International Berlin Open – 2026**

- Recently, Rajasthan-based swimmer Aryan Nehra won a bronze medal in the 800m freestyle event at the International Berlin Open– 2026, held in Germany.
- **Venue of the competition:** Berlin, Germany.
- **Aryan Nehra hails from:** Sikar.

Geography and Geology

Jamun (*Syzygium cumini*)

Why in News?

- According to a new study, the origin of Jamun occurred much earlier than previously estimated. India has played a central role in its evolutionary history.



Key Points:

Distribution:

- It is an endemic species of the Indian subcontinent and Southeast Asia.
- It is widely cultivated in India, Sri Lanka, Bangladesh, and Myanmar.

Climatic Conditions:

- It is an evergreen tree that thrives in tropical and subtropical climates.
- It is tolerant of waterlogging and salinity.
- **Significance:** Its seeds and bark are utilized in Ayurveda, particularly in the treatment of diabetes.



Economic Developments



Circular Economy



Why in News?

- The world is rapidly moving towards a "Circular Economy." The Union Minister of Science and Technology cited an example wherein the government generated revenue exceeding ₹4,000 crore from scrap (including e-waste) during the cleanliness drive.



Key Points:

Circular Economy

- **Definition:** According to the International Organization for Standardization (ISO), it is an economic system in which resources are utilized repeatedly—by recovering them, reusing them, and enhancing their value—to facilitate sustainable development.

- This stands in contrast to the traditional 'linear economic model' of "take-make-use-dispose," wherein resources are utilized once and subsequently discarded.
- **Potential in India:** By the year 2050, this sector could generate a market value exceeding \$2 trillion and create approximately 10 million (1 crore) job opportunities.

Key Benefits of a Circular Economy:

- Reduction in waste generation
- Conservation of natural resources
- Reduced dependence on raw materials
- Increase in employment opportunities

Key Steps Taken Towards a Circular Economy in India

- **Policy Measures:** The National Resource Efficiency Policy (NREP), 2019, has been formulated; a framework for Extended Producer Responsibility (EPR) has been released, among other initiatives.
- **Enabling Schemes:** Swachh Bharat Mission (aimed at making India a waste-free nation); Atal Innovation Mission (supporting the development of circular business models), etc.
- **Research and Development:** A 'Circular Economy Division' has been established within NITI Aayog. Under this division, specialized working groups have been constituted to focus on areas such as tires, e-waste, metal scrap, etc.
- **Sector-Specific Policies:** Steel Scrap Recycling Policy; MSE-Scheme for Promotion and Investment in Circular Economy (MSE-SPICE); Ecomark Rules, etc.

Global Leadership Initiatives:

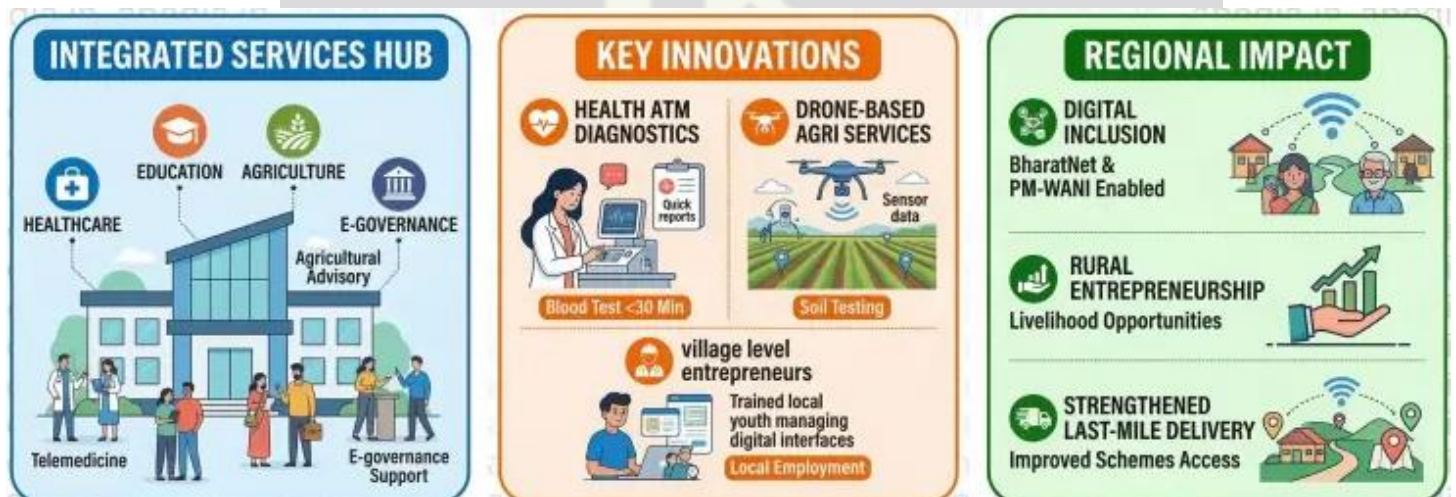
- The Jaipur Declaration was issued at the 12th 'Regional 3R and Circular Economy Forum in Asia and the Pacific' (2025).
- Mission LiFE (Lifestyle for Environment), etc.

Schemes and Policies

Samruddha Gram Initiative

Why in News?

- The Samruddha Gram Initiative was nominated for the World Summit on the Information Society (WSIS) Prizes 2026, under the 'Enabling Environment' category.



Key Points:

- Governments, private companies, civil society organizations, international bodies, etc., are all eligible to submit projects for the WSIS Prizes.

About the Samruddha Gram Initiative: Integrated Phygital Service Delivery Model

- **Ministry:** Ministry of Communications.
- It is built upon the BharatNet infrastructure and establishes 'Samruddhi Kendras' (Centers of Prosperity) to serve as one-stop hubs for delivering integrated "Phygital" (Physical + Digital) services.
- **Significance:** It enables rural citizens to access essential services such as healthcare, education, agriculture, financial inclusion, and e-commerce.

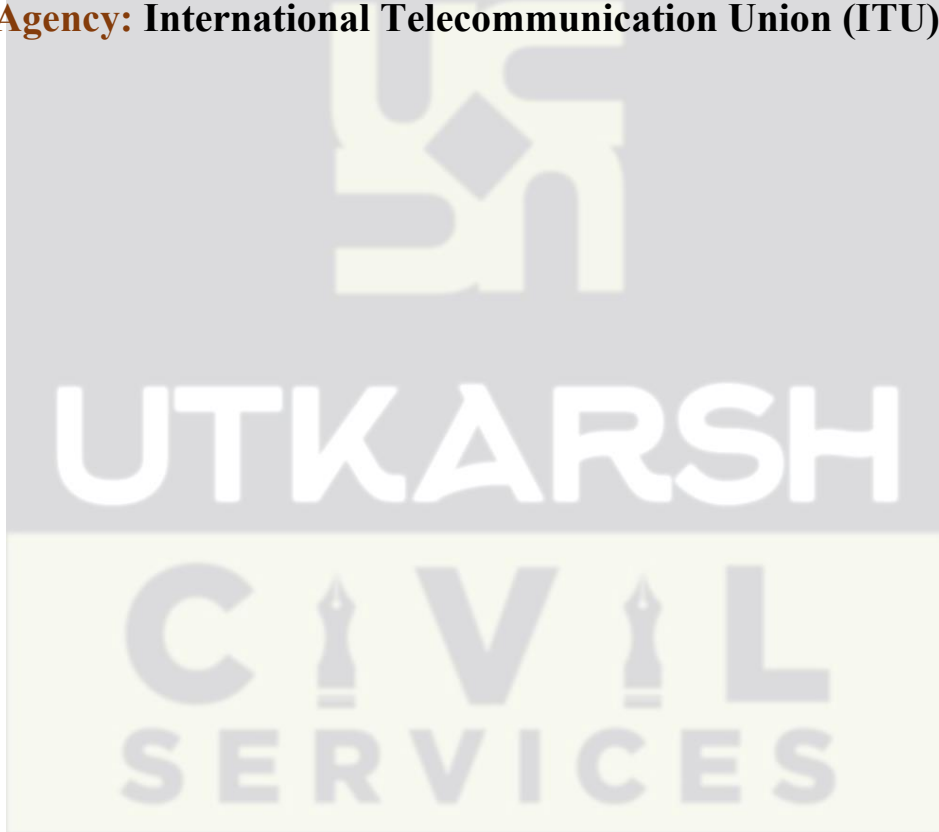
Daily Current Affairs

Date : 22 April 2026



World Summit on the Information Society (WSIS)

- It is a two-phase, multi-stakeholder summit. It promotes digital development and inclusive information societies.
- **Geneva Phase (2003):** This phase established the foundational framework.
- **Tunis Phase (2005):** This phase focused on implementation. It established the Tunis Agenda, which led to the creation of the Internet Governance Forum.
- **Lead UN Agency:** International Telecommunication Union (ITU).



-:15:-

Odisha: The First State to Launch Marine Spatial Planning

Why in News?

- The Government of Odisha recently signed a Memorandum of Understanding (MoU) with the National Centre for Coastal Research—under the Union Ministry of Earth Sciences to launch a Marine Spatial Planning (MSP) initiative for integrated coastal and marine planning within the state.



Key Points:

- In the first phase, this initiative was launched in two Union Territories: Puducherry and Lakshadweep.

--:16:--

Daily Current Affairs

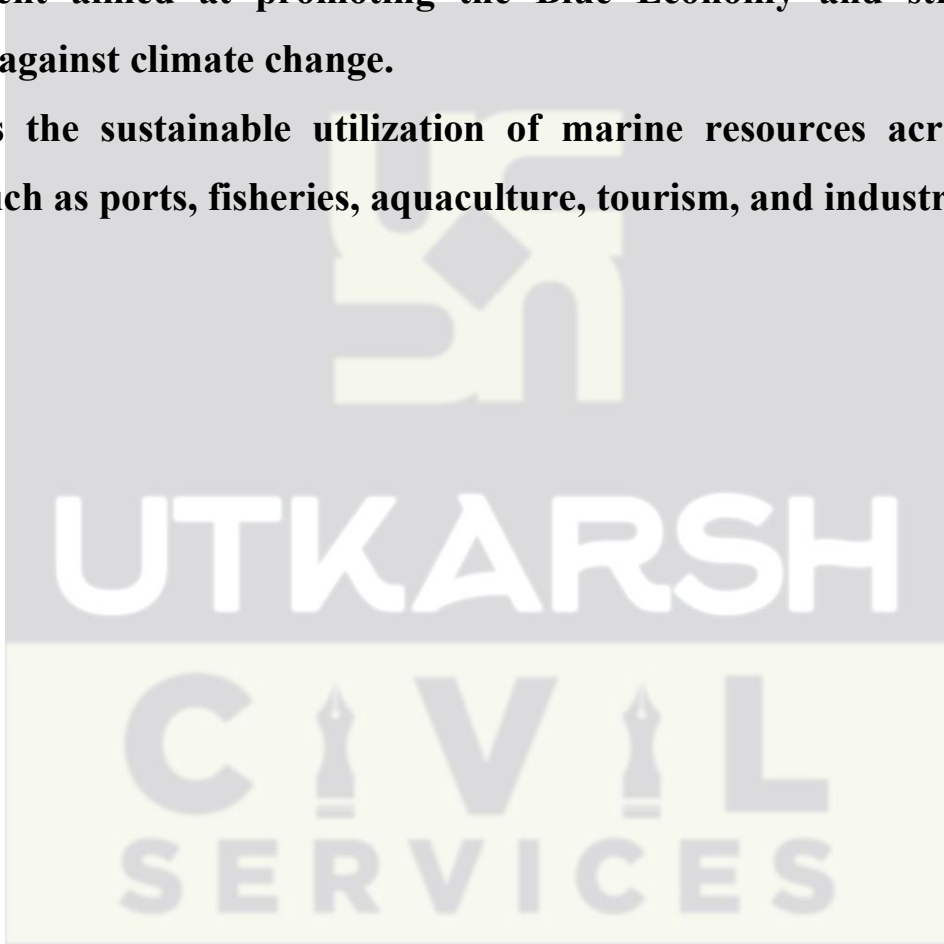
Date : 22 April 2026



- With a coastline spanning over 550 kilometers, Odisha has become the first state in the country to implement MSP in the second phase of the initiative.

What is Marine Spatial Planning (MSP)?

- Marine Spatial Planning is a tool for sustainable and integrated ocean management aimed at promoting the Blue Economy and strengthening resilience against climate change.
- It enables the sustainable utilization of marine resources across various sectors, such as ports, fisheries, aquaculture, tourism, and industry.



-:17:-



South Korean President's Visit to India



Why in News?

- The South Korean President Lee Jae-myung's visit to India marks a significant milestone in the realm of the "Special Strategic Partnership." As a result of this visit, a Joint Strategic Vision (2026–2030) and several other agreements were signed.



Key Points:

Key Outcomes of the Visit

- **Strengthening the Foundation of Bilateral Relations:** Annual leadership-level meetings have been institutionalized to provide continuous guidance to the partnership.

- **Coordination in the Indo-Pacific Region:** South Korea has joined the 'Indo-Pacific Oceans Initiative' (IPOI). This is a non-treaty-based, voluntary arrangement launched by India.
- **Economic Cooperation:** A target has been set to double bilateral trade to \$54 billion by the year 2030.
- **Economic Security Dialogue:** This initiative has been launched to enhance cooperation in the areas of supply chain resilience and technology.
- **Cooperation in the Climate Sector:** South Korea has joined the International Solar Alliance (ISA), while India has joined the Global Green Growth Institute (GGGI).
- **About the GGGI:** Headquartered in Seoul (South Korea), it is a treaty-based international and intergovernmental organization. It was established in 2012 during the Rio+20 Conference.
- **People-to-People Connect:** The years 2028–29 will be celebrated as the 'India–Republic of Korea Friendship Year.'
- The 'Mumbai Korea Center' will be established to foster cultural cooperation between K-Pop and Bollywood.
- **Maritime and Shipbuilding:** A comprehensive partnership in the fields of shipbuilding, shipping, and maritime logistics was announced. Additionally, the VOYAGES (Vision for Operation of 'Yard Assisted Growth with Efficiency and Scale') approach was shared.
- **Cooperation in Technology:** The 'India–Korea Digital Bridge' initiative was launched to facilitate cooperation in the sectors of AI, semiconductors, and IT.

India–South Korea Relations

- **Special Strategic Partnership:** This partnership was established in 2015.
- **Bilateral Trade:** Currently standing at \$27 billion, with India facing a trade deficit of \$15.19 billion.

Daily Current Affairs

Date : 22 April 2026



- **Comprehensive Economic Partnership Agreement (CEPA) 2010:** India is seeking its upgradation to address the trade deficit and ensure a more balanced partnership.

Defense Cooperation:

- **2020 Roadmap for Defense Industry Cooperation.**
- **K9-Vajra** howitzers are being manufactured in India through technology transfer by a South Korean company.
- **KIND-X (Korea-India Defense Accelerator)** has been launched to connect startups and investors.

UTKARSH

CIVIL
SERVICES

-:20:-



INDEXES AND REPORTS



Herfindahl-Hirschman Index (HHI)



Why in News?

- According to NITI Aayog's 'Trade Watch Quarterly' report, the HHI for exports is declining. This signals a diversification in exports, as concentration is decreasing across both products and regions.

Herfindahl Hirschman Index



Key Points:

Other Highlights of the Index

- **Gems and Jewellery Sector:** India's exports (excluding raw gold) hold a 7.8% share in the global market.
- Instability in West Asia has slowed down cooperation regarding the India–Gulf Cooperation Council (GCC) Free Trade Agreement.

Daily Current Affairs

Date : 22 April 2026



HHI

- It is a measure of the distribution of trade value across an exporter's entire range of trading partners.
- It is calculated as the sum of the squares of each trading partner's share in the total trade.
- A higher HHI value indicates greater trade concentration. Conversely, a lower value points to greater diversification.
- Greater trade concentration reduces resilience, as it leads to increased dependence on a single region or a specific type of product.

UTKARSH

CIVIL
SERVICES

-:22:-

'Household Social Consumption: Health' Survey

Why in News?

- Released by the Ministry of Statistics and Programme Implementation (MoSPI), this survey was conducted during the period of January–December 2025. It was carried out under the 80th round of the National Sample Survey (NSS).

Key Points:

- Approximately 13.1% of individuals reported suffering from certain ailments including chronic diseases during the 15 days preceding the survey. In the previous survey (2017–18), this figure stood at 7.5%.
- The hospitalization rate was highest (8.1%) among individuals in the 60 years and above age group.
- The reporting of infectious diseases has declined. Conversely, there has been an increase in the reporting of non-communicable diseases, such as hypertension, diabetes (both contributing the most), and thyroid disorders.
- Cardiovascular and endocrine/metabolic diseases were recorded most frequently among individuals aged 30 years and above.
- Near-universal institutional deliveries (accounting for approximately 96% of total deliveries) were recorded. Institutional delivery refers to childbirth taking place in hospitals.
- Health insurance coverage has expanded. This expansion is more pronounced in rural areas compared to urban areas, with the majority of enrollments occurring under government-sponsored schemes.